



Rossmore Court Park Road

, London, NW1 6XX

£5,500 Per month

Nestled in the heart of London, this splendid purpose-built flat at Rossmore Court offers an exceptional living experience. Spanning an impressive 1,776 square feet, this residence boasts a generous layout that is both spacious and inviting.

The property features 3/4 well-appointed bedrooms, providing ample space for family living or accommodating guests. With three modern bathrooms, convenience and comfort are at the forefront, ensuring that morning routines and evening relaxation can be enjoyed without hassle.

The central location places you within easy reach of the vibrant amenities of London, while the nearby Regents Park offers a serene escape into nature, perfect for leisurely strolls or picnics.

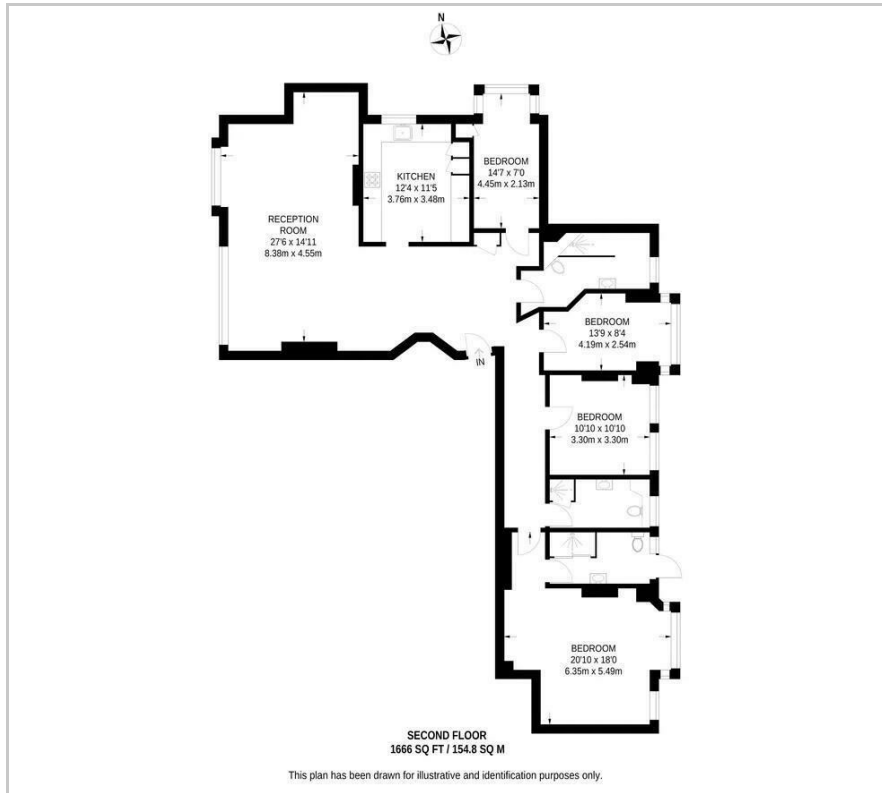
This flat is not just a home; it is a lifestyle choice, offering the best of city living with the tranquility of green spaces close at hand. Whether you are looking to invest or seeking a new place to call home, this property is a rare find in a sought-after area. Do not miss the opportunity to make this spacious flat your own.

Viewing

Please contact us on 020 3198 4517 if you wish to arrange a viewing appointment for this property or require further information.



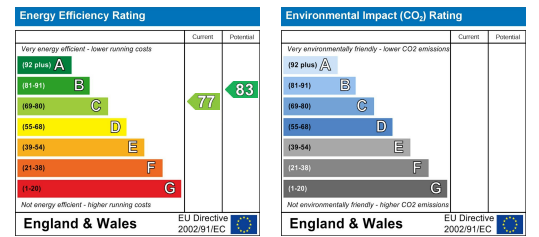
Floor Plan



Area Map



Energy Efficiency Graph



These particulars, whilst believed to be accurate are set out as a general outline only for guidance and do not constitute any part of an offer or contract. Intending purchasers should not rely on them as statements of representation of fact, but must satisfy themselves by inspection or otherwise as to their accuracy. No person in this firm's employment has the authority to make or give any representation or warranty in respect of the property.